



GOBIERNO
DE COLOMBIA



MINAGRICULTURA



upra
Unidad de Planificación
Rural Agropecuaria



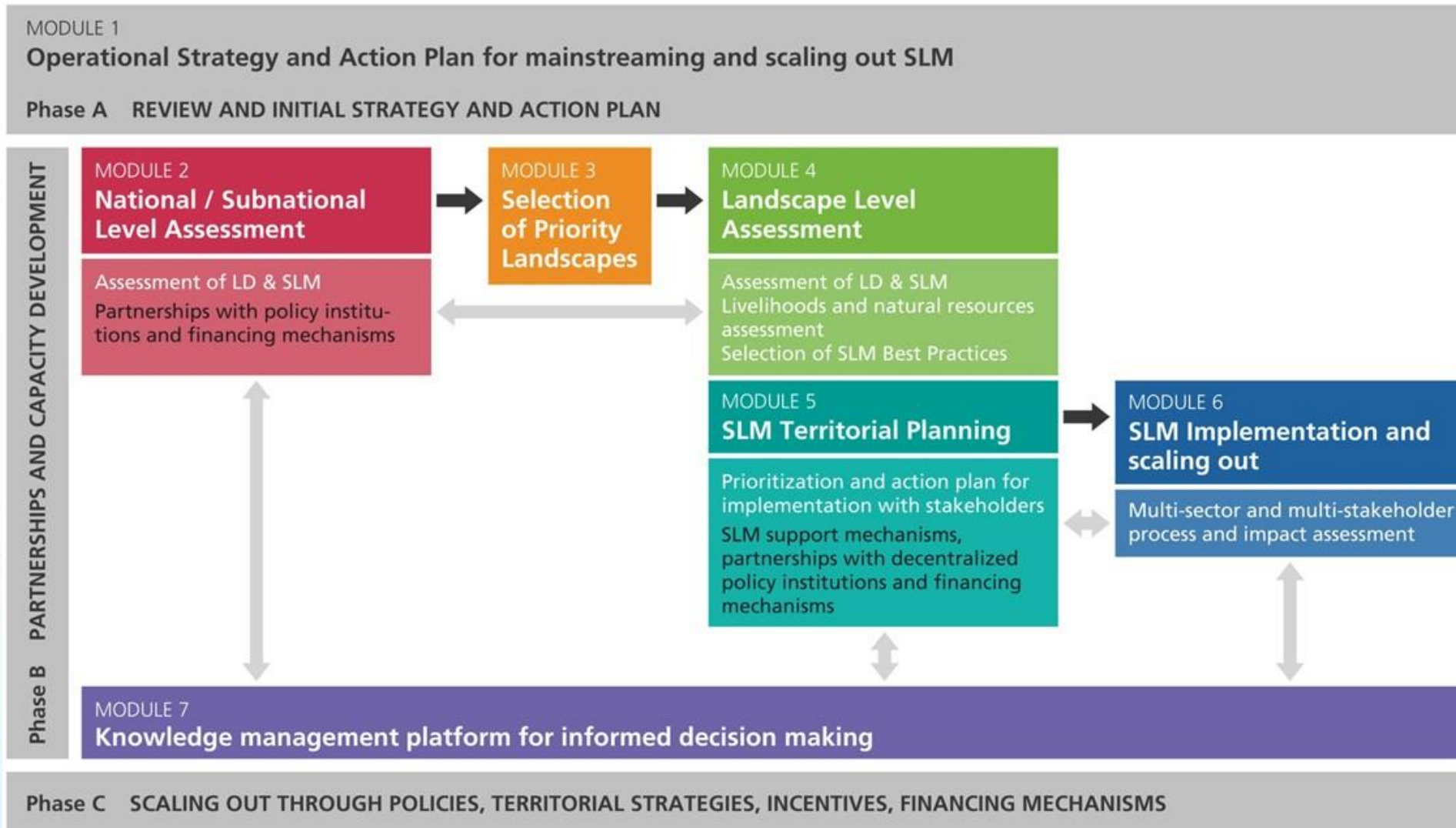
Organización de las Naciones
Unidas para la Alimentación
y la Agricultura

Decision Support for Mainstreaming and Scaling up of Sustainable Land Management PROYECT DS-SLM GCP/CGLO/337/GFF

Strategy to incorporate sustainable land management (SLM) in
decision support with emphasis on planning instruments in
Colombia

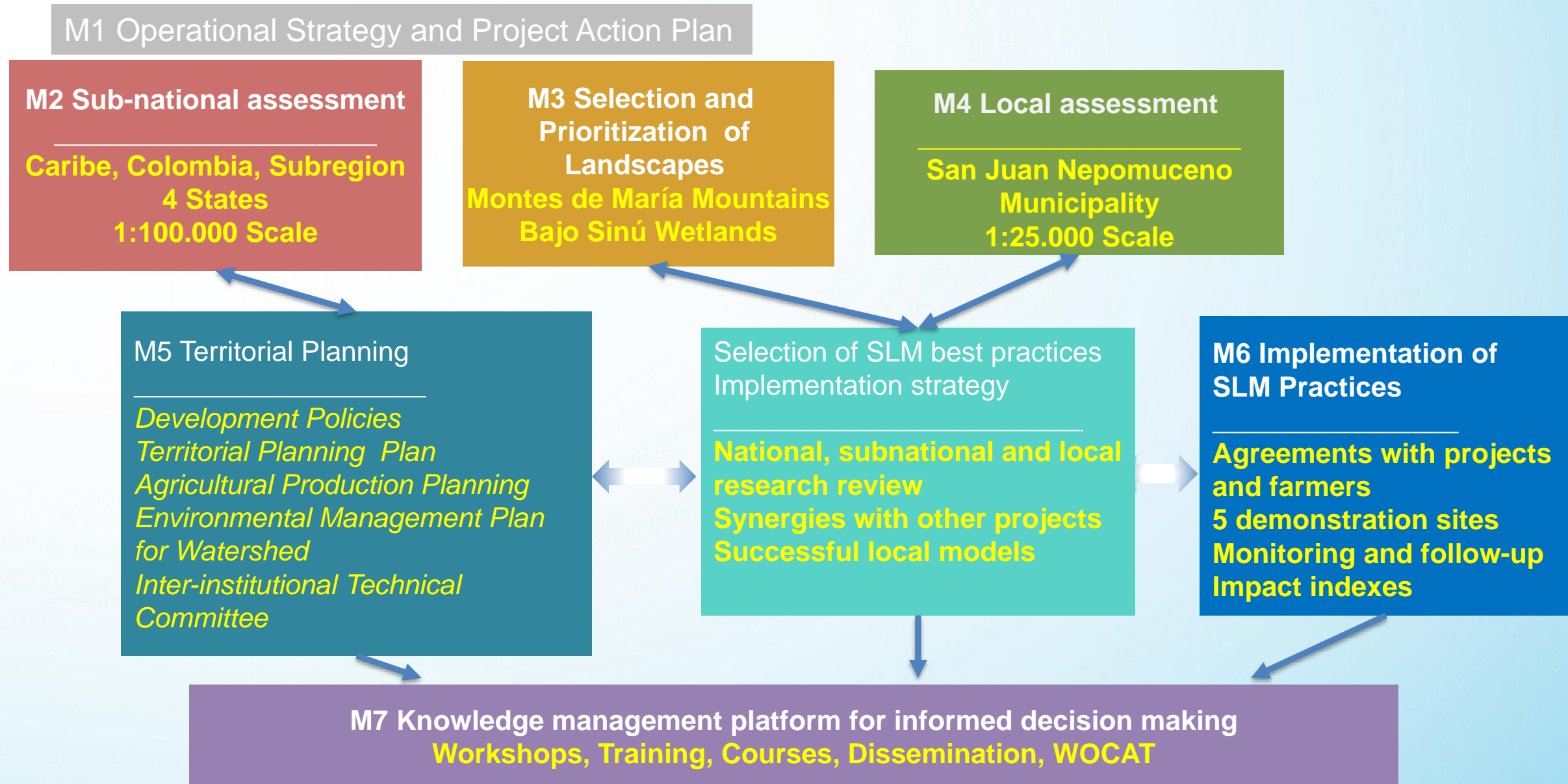
GLOBAL FORUM LANDSCAPE - SIDE EVENT
Scaling up SLM in the landscape: a framework for decision support
2 December 2018

Decision Support Framework for SLM mainstreaming and scaling out



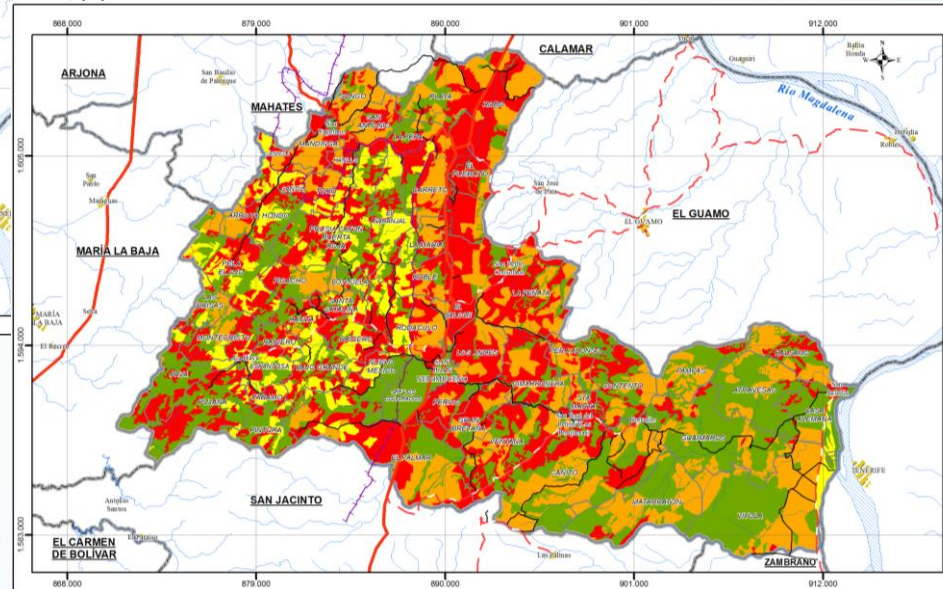
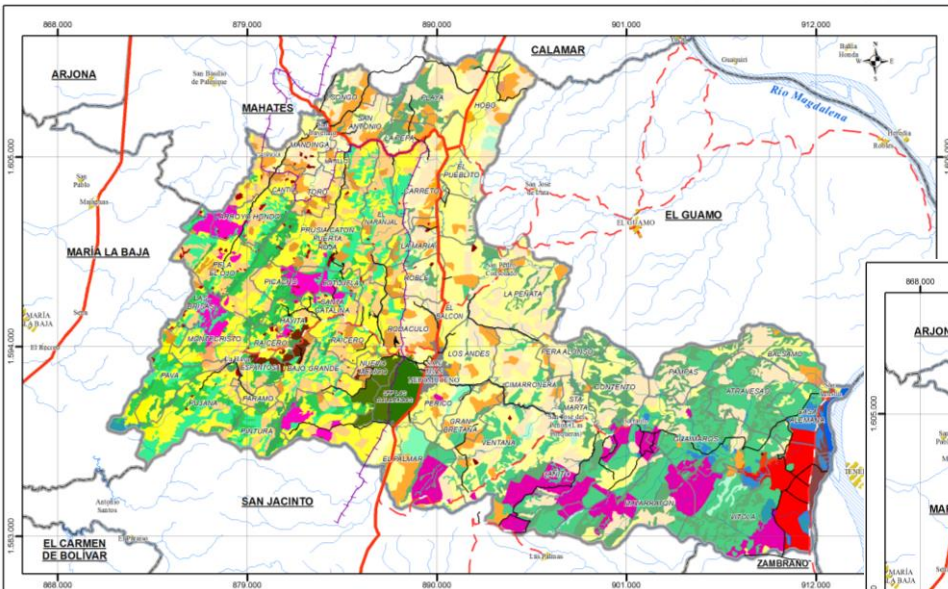
Use of the project's decision support framework

DS-SLM Methodology framework - Implementation - Colombia, South America

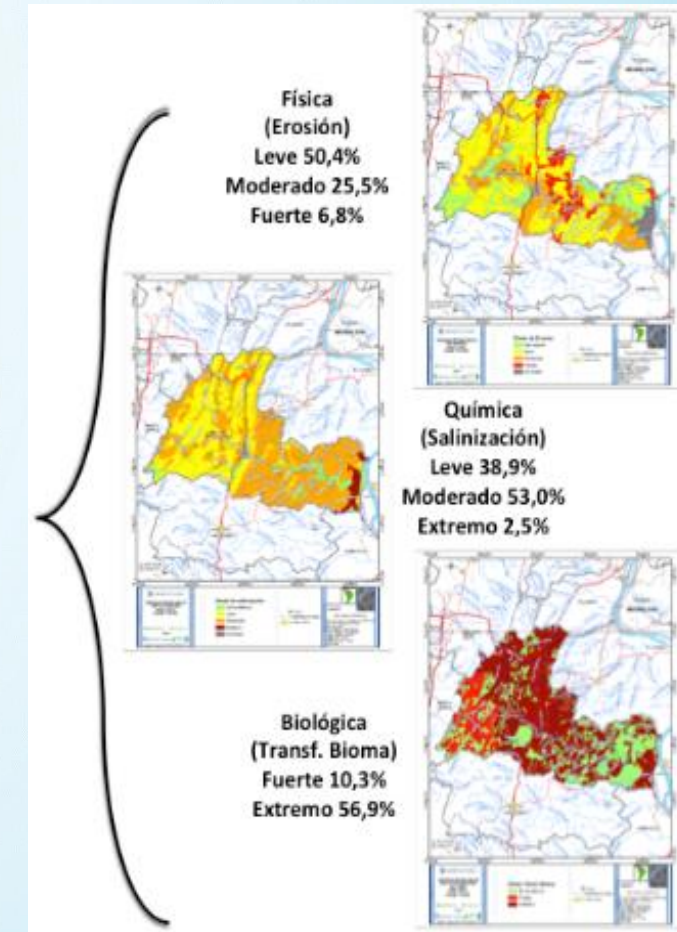


use of the project's decision support framework

MODULE 4



Map of land use
Identification of land use systems-LUS



Map Assessment of land degradation
Local level – San Juan Nepomuceno Municipality, Bolívar

approach and actions in a specific landscape (degradation problems, SLM solutions)

MODULE 6

MONTES DE MARÍA LANDSCAPE Bolívar, Colombia



Deforestation of the tropical dry forest

Fragmentation of ecosystems

Burning, erosion, compaction



Tree recovery



Agroforestry and silvopastoral systems

Creation of biological corridors
Conservation and production mosaics
Greater biomass and COS
Food safety
Greater labor
Social stability

MODULE 6

approach and actions in a specific landscape
(degradation problems, SLM solutions)

BAJO SINÚ WETLANDS LANDSCAPE
Córdoba State



Deforestation of flooded forest



Pastures and livestock



Salinization, drought, loss of biodiversity



Indigenous ancestral practices



Forest recovery, crops, forages



Greater fishing
Food diversity

Recovery of aquatic
biodiversity



the established process for mainstreaming and scaling up of SLM

MODULE 5

Objectives and activities to overcome barriers

Awareness and knowledge management in the MST to producers and farmers
Institutional presence
Resources for sustainable projects
Support for peace processes

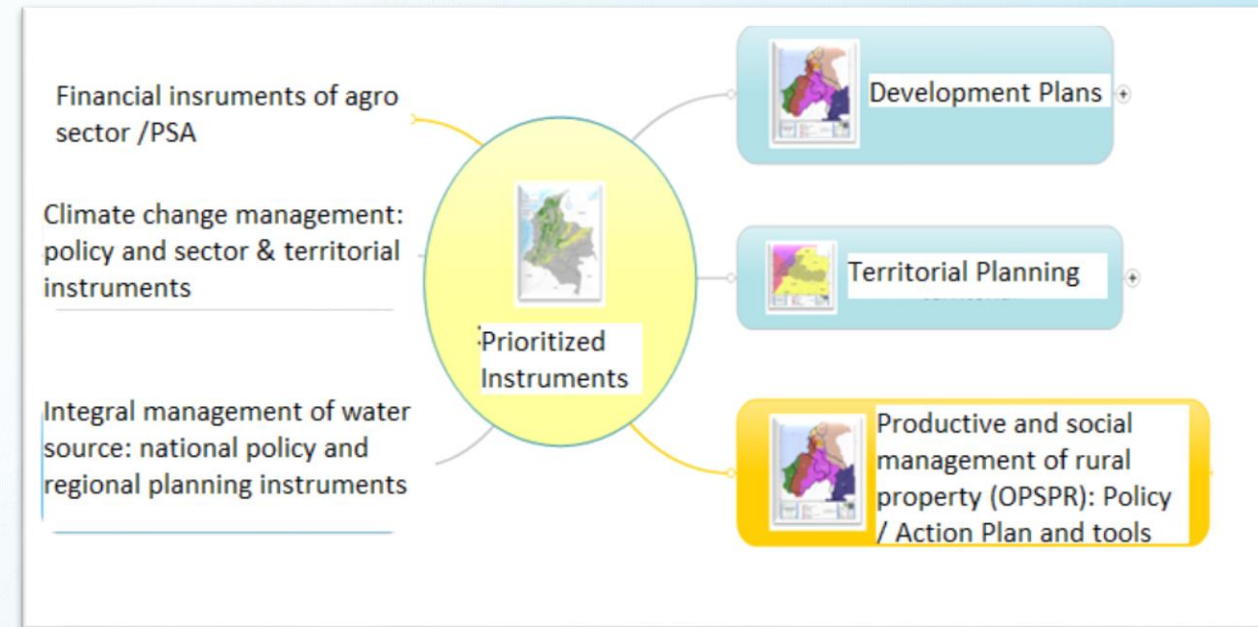
Research, extension, and assistance in SLM practices
Policies and projects of reconversion, green growth, restoration
Incorporation of SLM in projects

Institutional strengthening
Inter-sector agendas
LADA, WOCAT, SLM Training

Barriers to implement and scaling up SLM:

- - Weakness in policies
- Institutional disarticulation
- Lack of financial planning
- Weakness in extension and agricultural assistance

Integration of the SLM in planning instruments



SUSTAINABILITY OF THE
PROCESS & REPLICA OF BEST
PRACTICES SLM



THANKS FOR YOUR ATTENTION

Javier Otero García

Javier.oterogarcia@fao.org

