

Royaume du Maroc



Food and Agriculture
Organization of the
United Nations

Ministère de l'Agriculture, de la Pêche Maritime, du Développement Rural
et des Eaux et Forêts

Haut Commissariat aux Eaux et Forêts et à la Lutte Contre la Désertification
Direction Régionale des Eaux et Forêts et de la Lutte Contre la
Désertification du Sud-ouest



Global Landscapes Forum 2018
Bonn/Germany SIDE EVENT

Scaling up SLM in the landscape: a
framework for decision support

From the diagnosis of land use systems to territorial
planning and scaling-up sustainable land management in
specific landscapes in Morocco



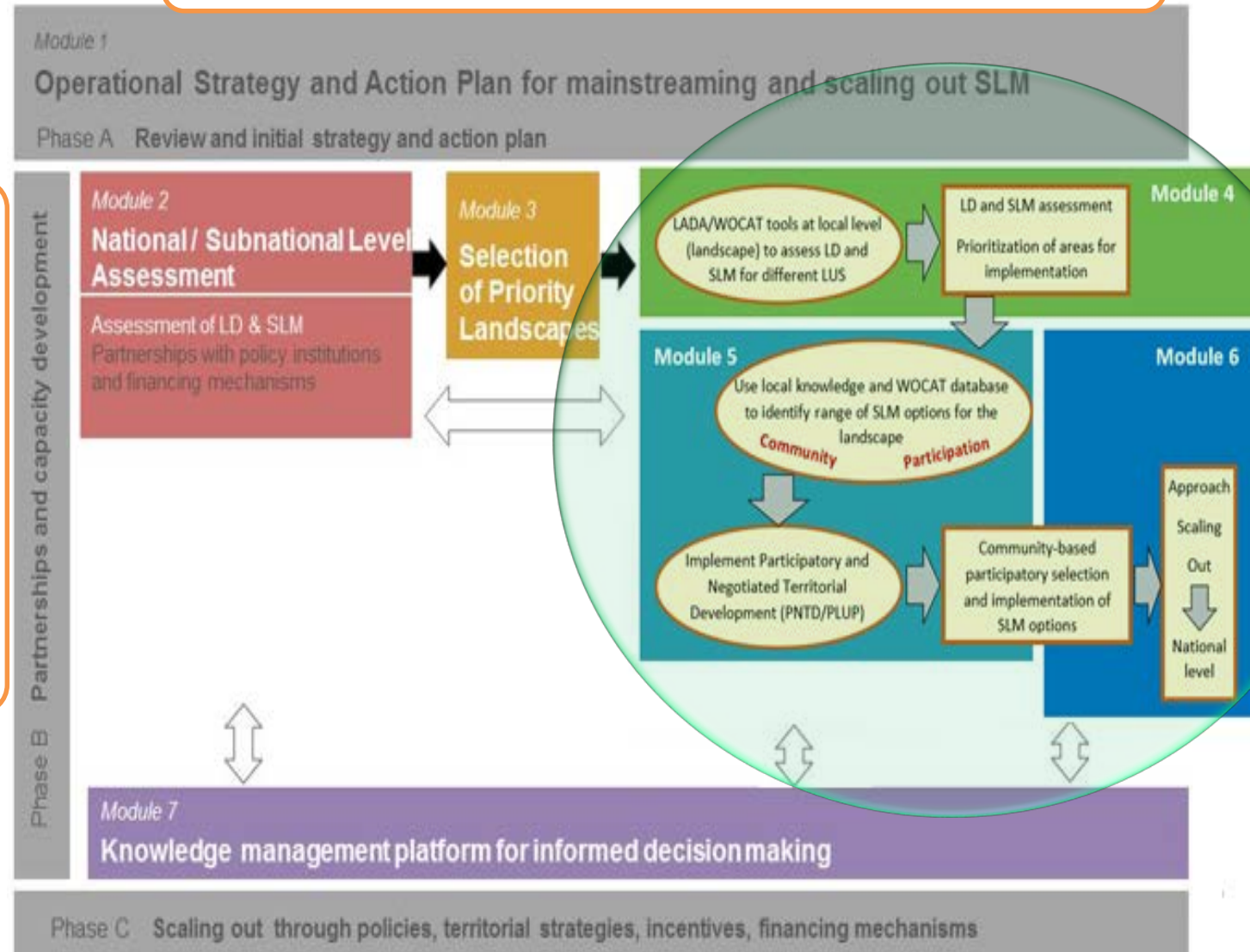
Prepared by: **OUCHNA
Rochdi**

Presented by: **GUERROUJI
Mohammed**

01-02/12/2018



Phase 2: National Level (Review of Existing Strategy and Action Plans Lessons Learned (Strengths and Constraints))



Phase 1:
Partner
Analysis
and
Capacity
Develop
ment

Phase 3:
Sub-
national
level:

Integration
demonstration
pilot
cases

Mapping
land use
systems at
a suitable
scale

Elab.
degradation
maps
and

Elab. map
of good
practices.

Monitorin
g and
evaluation

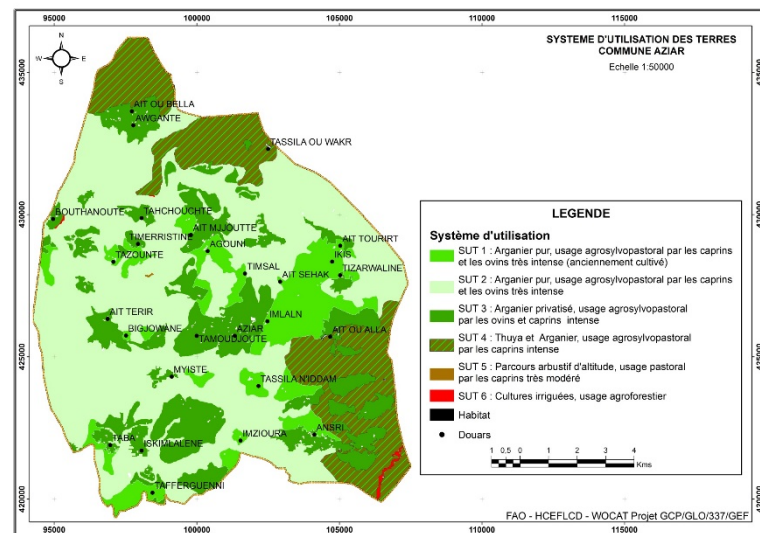
Phase 4: Scaling up through policies, territorial strategies, incentives, financing mechanisms

Evaluation at the level of priority use systems and Structuring links with degradation factors in consultation with stakeholders (DPSIR, SWOT);
Prioritization and action plan for implementation with stakeholders;
Implementation and generalization.

PRINCIPAUX TYPES DE DÉGRADATION
REGION SOUSS MASSA

FAO - HCE/FLCD - WOCAT Projet GCP/GO/337/GEF

- ❑ The integrated understanding of DT and SLM
- ❑ Prioritization of landscapes and actions
- ❑ To set up a monitoring base



STEPS FOR TERRITORIAL PLANNING AND IMPLEMENTATION OF GOOD PRACTICES

PARTICIPATORY EVALUATION OF DT AND SLM / LADA-WOCAT

Reminder of the results of the DT / TDM assessments, in particular the GDT option adopted by the users of resources

Constraints to setting up

Options SLM
barrier analysis

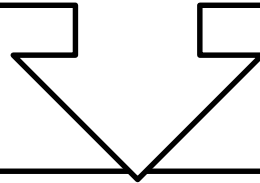


Analysis of key decision-making processes

| Problems of Degradation | Sustainable Management Practices | positive, Neutral, negative | Degree of adoption (%) | Constraints related to the adoption of SLM practices |
|--|---|-----------------------------|------------------------|--|
| Loss of soil fertility | Manure input | Positive | 90 | Low manure production Limited livestock Low livestock feed Lack of ability to manufacture manure (compost pit) |
| Water erosion (groundwater and stripping, gully) and wind (on the coast) | Terrace construction Walls construction Construction of dry stone cords Planting trees and shrubs | Positive | 50 60 30 80 | Lack of labor due to emigration Land insecurity Poverty Lack of support for small farmers Lack of training (ability) |
| Degradation of vegetation cover | Practice of agdal Sharing and privatization of argan tree stands Conversion of goats into sheep | Positive | 50 50 80 | Difficulties to make the rights-holders adhere to the respect of the action Emigration Erosion of the power of the jmaâ |
| Degradation of pastoral potential | Prohibition by the population of the collection of the thymus saturoides in the mountains. Conversion of goats into sheep. | Positive | 30 80 | Difficulties to make the rights-holders adhere to the respect of the action |



**AGREEMENTS ON PRIORITY LUS AND LIST OF GOOD
PRACTICES TO BE IMPLEMENTED**



Execution mode (Triennial planning)

Adopted physics

Responsibilities

Partners

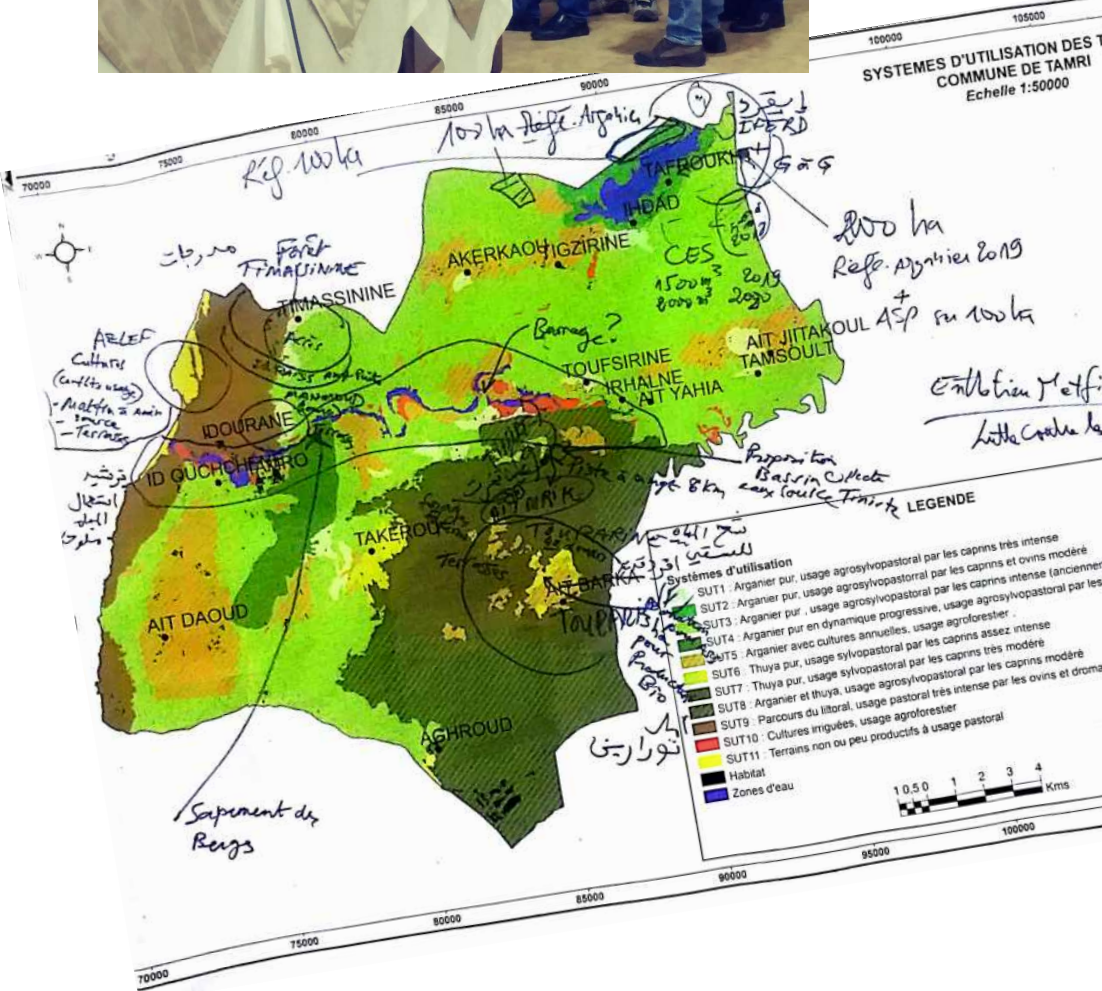


TERRITORIAL DEVELOPPEMENT PACT



CR TAMRI

| BONNE PRATIQUE | % Adoption - UNITE | RESPONSABLES | PARTENAIRES |
|---------------------------------------|---|-------------------------|--|
| COMPOSTAGE | importants produits à valoriser | ADL / PND 21/12/2017 | ECONOMIE Circulaire/PND |
| lutte contre le Serpent de bœufs | Identification points noirs menaces JGHAY MAHMOUD | M. Agriculture ABH | Collectivités Territoriales ADL/CR/CP |
| TERRASSES | مخارج تلال محمود أوراب تشيون | MAPA ? | ADH/privés |
| CORDONS PIERRE SECHE | 900 m ³ | Eau et Forêt | ADL |
| Plantation d'arbres | 300 ha Jfah | Eau et Forêt | ADL CT |
| Correction des Ravins | PG 2013 | Eau et Forêt | CT/ADL |
| Agroel | intensive | Parcours local | AL/EF |
| PROTECTION PAM (Thymus suberoides) | Sensibilisation | ADL HCEFLCD | CT |
| Plantation PAM | 700 ha | AND20A | ADL/privés |
| VALORISATION PAM | | Coop AN320A | ADL HCEFLCD |





**Thank you for your
attention**

