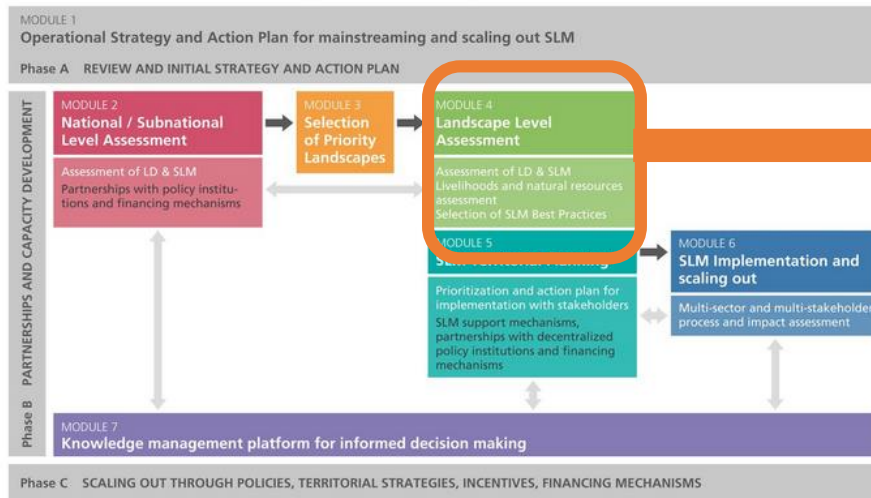


Evidence-based decision support for SLM

Global level

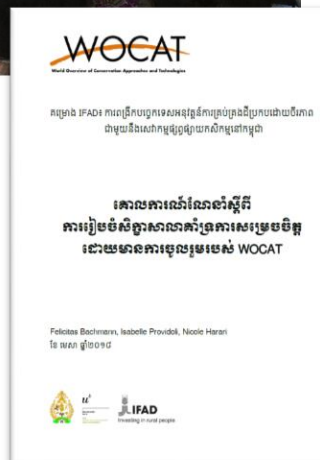
Decision Support Framework for SLM mainstreaming and scaling out



www.wocat.net/en/decision-support-slm

Local level

Participatory stakeholder workshops for the selection of SLM practices at local level



GLOBAL level

Decision Support for Mainstreaming and Scaling out SLM (DS-SLM) project

2015-2019



15 Partner countries:

Africa: Lesotho, Morocco, Nigeria, Tunisia

Asia: Bangladesh, China, Philippines, Thailand

Europe and Central Asia: Bosnia and Herzegovina, Turkey, Uzbekistan

Latin America: Argentina, Colombia, Ecuador, Panama



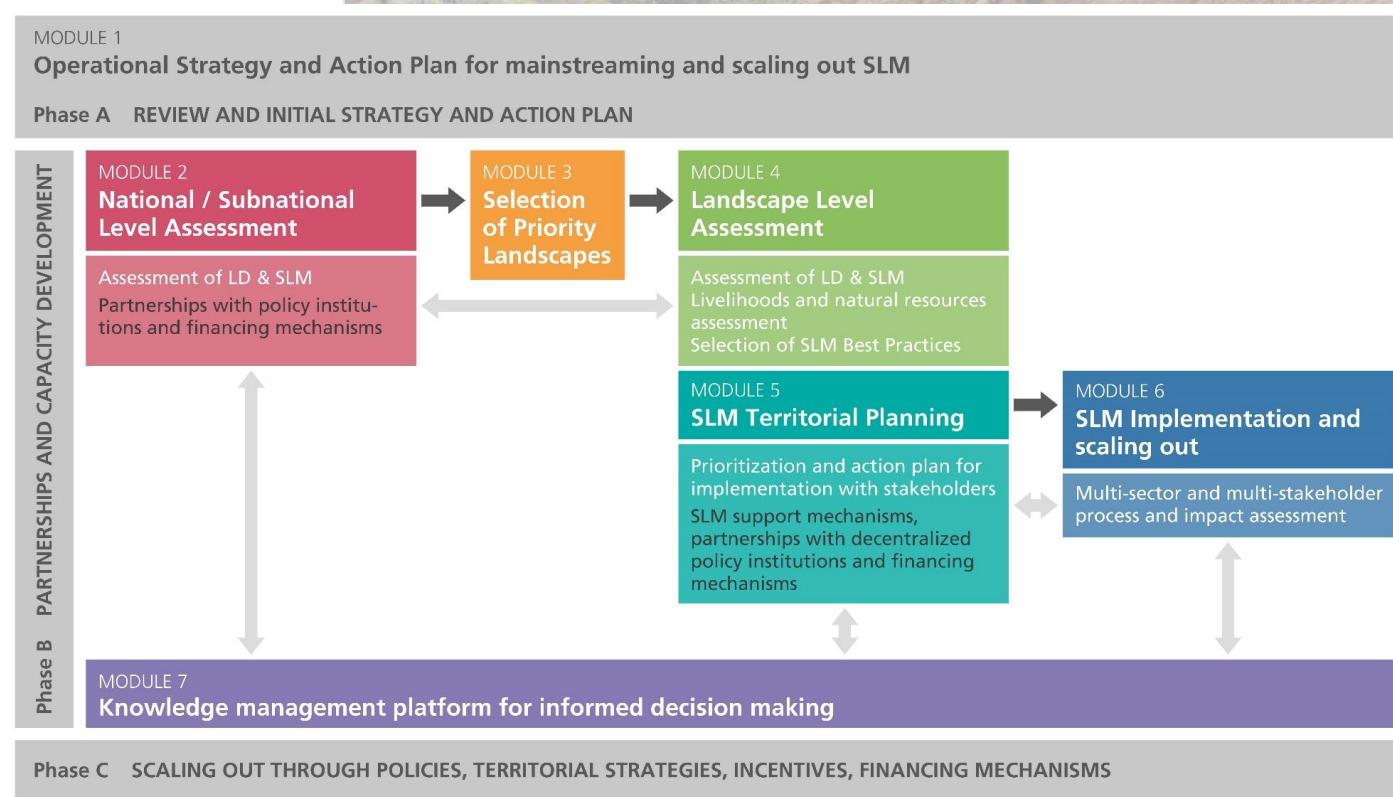
Food and Agriculture
Organization of the
United Nations



Decision Support Framework for Mainstreaming and Scaling out SLM

Key features

- **strategy : where, what and how?**
- **toolbox for assessment and planning** from **local/ landscape** to **subnational/ national scales**
- **participatory, multi-sector and multi- stakeholder processes**
- **flexible, adaptable** to country needs; **modular format**
- **capacity building**



Decision Support Framework for Mainstreaming and Scaling out SLM

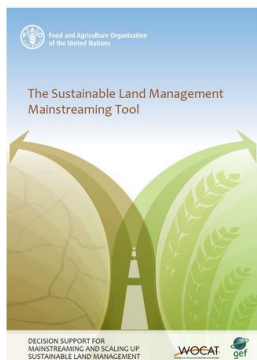
Module 1

Countries design and implement strategies for:

- **mainstreaming SLM**
- **integrating SLM in evidence-based decision-making** processes
- **national** and/or **landscape/ local** level
- **strengthening partnerships and capacity development**

Tool:

- ❖ **FAO DS-SLM Mainstreaming Tool**



Different decision making processes:

Policies and regulations	<ul style="list-style-type: none">• National development policies• Sectoral policies (e.g. agriculture, economy, environment)• Regulatory instruments (laws, regulations)• National strategies and action plans
Programmes and projects	<ul style="list-style-type: none">• National and subnational sectoral and cross-sectoral programmes and projects (e.g. environment, agriculture, climate change, small business)
Incentives and Financing mechanisms	<ul style="list-style-type: none">• Financing frameworks (budget allocations)• Economic and non-economic incentives• Microcredit• Financing mechanisms and funds (e.g. watershed funds)• Certification schemes
Land-use and territorial planning processes	<ul style="list-style-type: none">• Land-use and territorial planning processes at all levels• Landscape planning• Budgetary allocations of administrative units for sustainable land management• Information and monitoring systems
Local decisions	<ul style="list-style-type: none">• Local organizations (e.g. producer associations, indigenous organizations)• Local management plans

+ Education and Awareness raising



Example: Federation of Bosnia and Herzegovina



Mainstreaming strategy



Key Mainstreaming objectives:

To integrate SLM into Development strategy of Tuzla Canton 2016-2020

*Priority measure were SLM could be integrated:
Improve land quality and restore degraded land functions*

Integration of SLM Approaches and Tools into the Cantonal Land Management Plan

This is considered as the most important document for SLM integration for policy planning, especially for funding the activities.

To integrate SLM into municipal development strategies

Very important documents for SLM integration at the local level, dissemination of practices at the local level and funding the activities.

Cantonal level

Municipal level

9 strategies



Podrška odlučivanju o uvođenju i širenju primjene održivog upravljanja zemljištem
DS-SLM PROJEKT

MODUL 1. STRATEGIJA UVOĐENJA

TABELA 1. PREPREKE ZA SLM IMPLEMENTACIJU

Cilj: Identifikacija i prioritizacija prepreka i nedostataka za stvaranje povoljnog okruženja (političkog, finansijskog, tehnološkog i kulturnog) za prevazilaženje smetnji u SLM implementaciji i širenju.

REPUBLIKA SRPSKA, BOSNA I HERCEGOVINA

PREPREKE ZA SLM IMPLEMENTACIJU I ŠIRENJE	PRILIKE DA SE INTEGRIŠE SLM
Identifikovati institucionalne prepreke za implementaciju i širenje SLM-a (navesti do 2 prepreke za svaku kategoriju)	Identifikovati institucionalne mogućnosti i opšte akcije koje projekat DS-SLM može učiniti kako bi se prevazišle barijere
Političke i institucionalne prepreke	
Primjer: Strategija ruralnog razvoja ne uključuje SLM u dovoljnoj mjeri 1. (Pupunilo)	Primjer: Decentralizovani procesi poljoprivrednog planiranja su otvoreni za integraciju SLM indikatora.
2.	
Programi i projekti	
Primjer: Postojeći programi i projekti ne omogućavaju niti uključuju primjenu važnih SLM tehnologija 1. (Pupunilo)	Primjer: Nema aktivnosti u programima koje bi usvajale SLM tehnologije.
2.	
Ekonomске, finansijske i podsticajne barijere	
Primjer: Postoji malo mehanizama podsticaja za SLM. 1. (Pupunilo)	Primjer: Postoji mehanizam podsticaja za reкултивaciju zemljišta koji se može ojačati kroz podjelu metodologije LADA-WOCAT i rezultata projekta
2.	
Prepreke u procesu teritorijalnog planiranja	
Primjer: SLM nije uključen u alate za teritorijalno planiranje. 1. (Pupunilo)	Primjer: SLM indikatori mogu biti integrirani u planove upravljanja vodnim slivovima
2.	
Lokalne tehnologije i znanje	
Primjer: Farmeri su izgubili tradicionalno znanje o SLM tehnologijama 1. (Pupunilo)	Primjer: DS-SLM može dijeliti metodologiju za procjenu SLM tehnologija i stvarati sinergije sa lokalnim zajednicama.
2.	

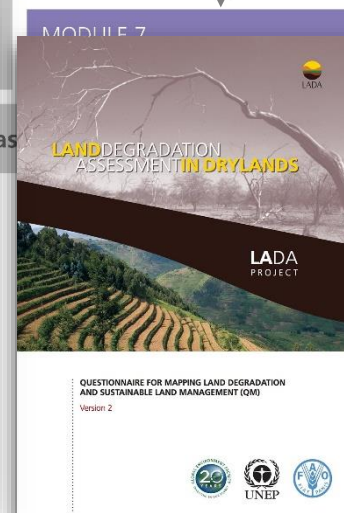
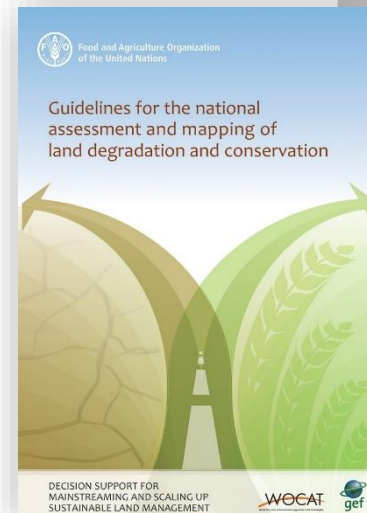
Decision Support Framework for Mainstreaming and Scaling out SLM

Module 2 & Module 3 (Sub) National level

- understand **drivers, pressures and impacts** of LD and SLM
- analyse **state and trends** for each Land Use System
- identify LD '**hot spots**' of and SLM '**green spots**'
- discuss them in multi-stakeholder workshops; set criteria; **identify priority landscapes** for intervention and **SLM options** for specific contexts

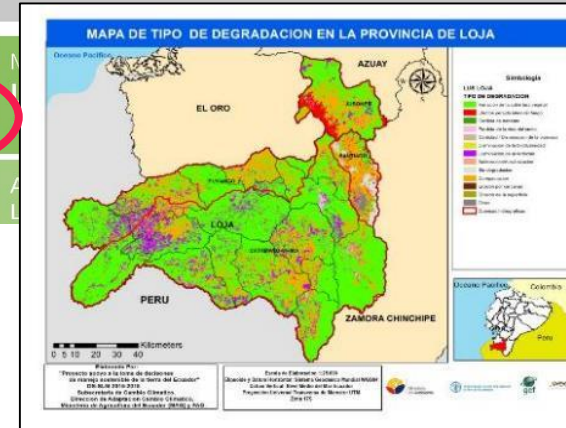
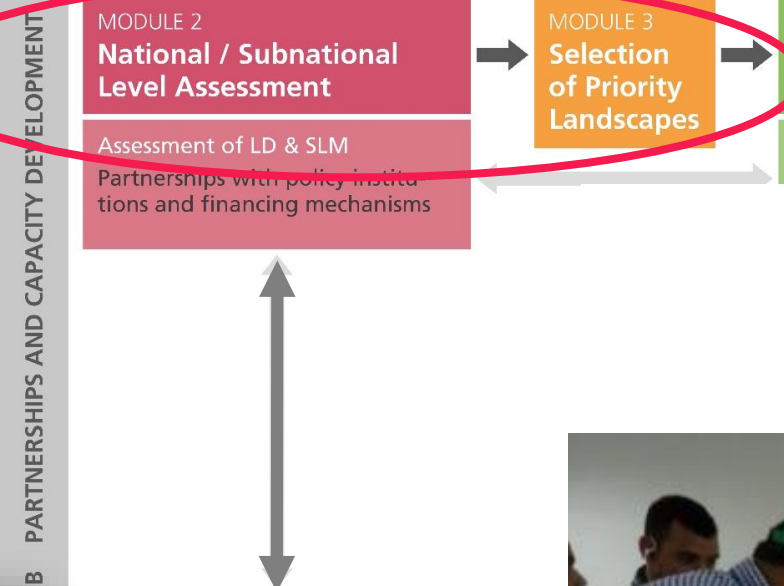
Tools:

- ❖ LADA-WOCAT Questionnaire for Mapping Land Degradation and SLM



Operational Strategy and Action Plan for mainstreaming and scaling out SLM

Phase A REVIEW AND INITIAL STRATEGY AND ACTION PLAN



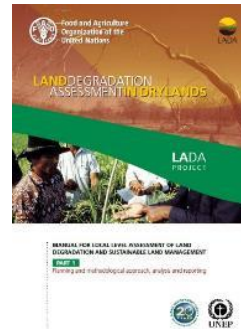
Decision Support Framework for Mainstreaming and Scaling out SLM

Module 4 : Landscape level Assessment

- identify **priority locations** using landscape assessment results
- identify potential **SLM practices** in multi-stakeholder workshops
- document and **assess SLM data** and good practices
- **negotiate and select** relevant SLM options with stakeholders

Tools:

- ❖ WOCAT Questionnaires and Database on SLM Technologies and Approaches
- ❖ LADA local assessment



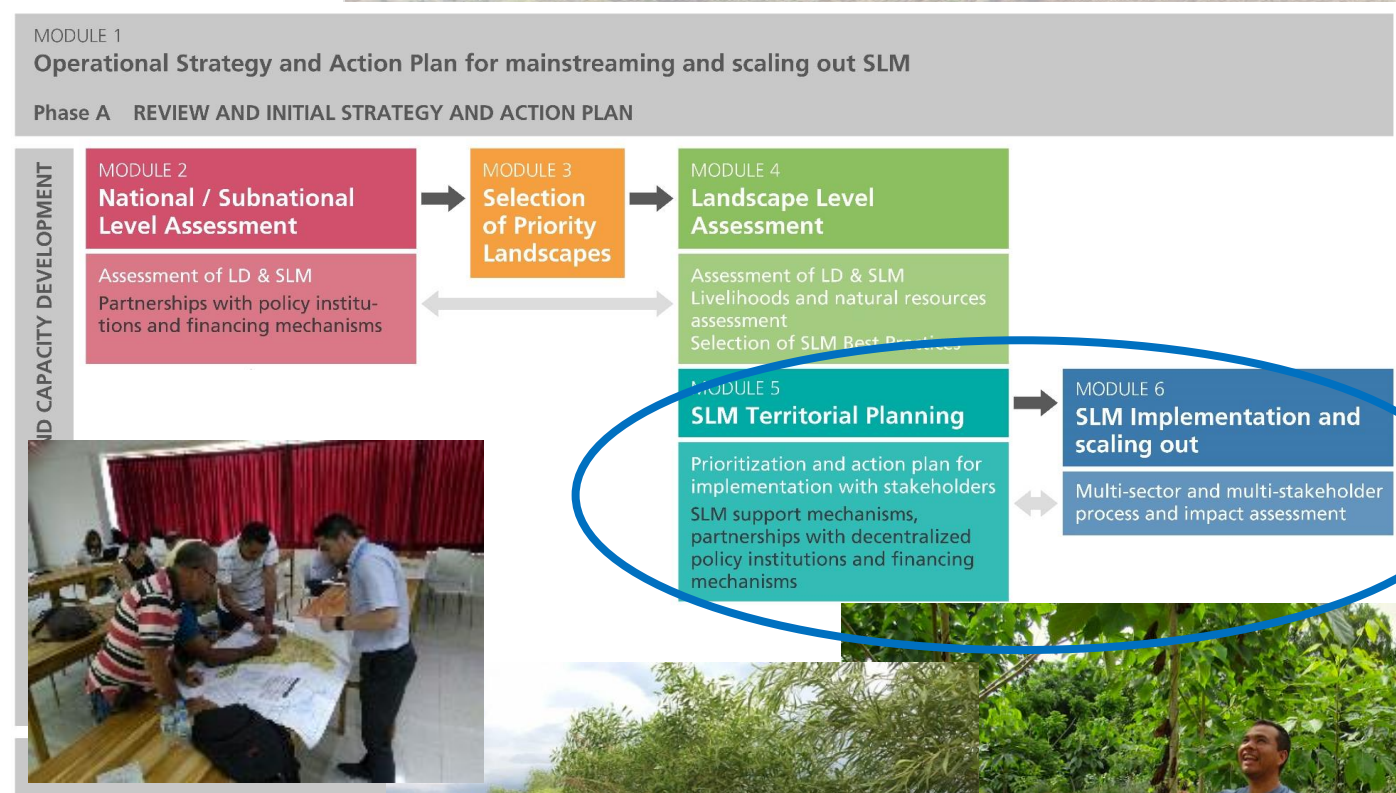
Decision Support Framework for Mainstreaming and Scaling out SLM

Module 5 & Module 6: Territorial Planning and Implementation

- review landscape assessment
- multi-stakeholder process to negotiate and select **territorial responses**, considering existing plans and implementation mechanisms
- **test implementation** and **demo sites**,
- **farmer-to-farmer** learning, awareness raising, capacity building through technical assistance teams etc.

Tools:

- ❖ FAO Participatory Land Use Planning (PLUP)
- ❖ FAO Land Resources Planning toolbox



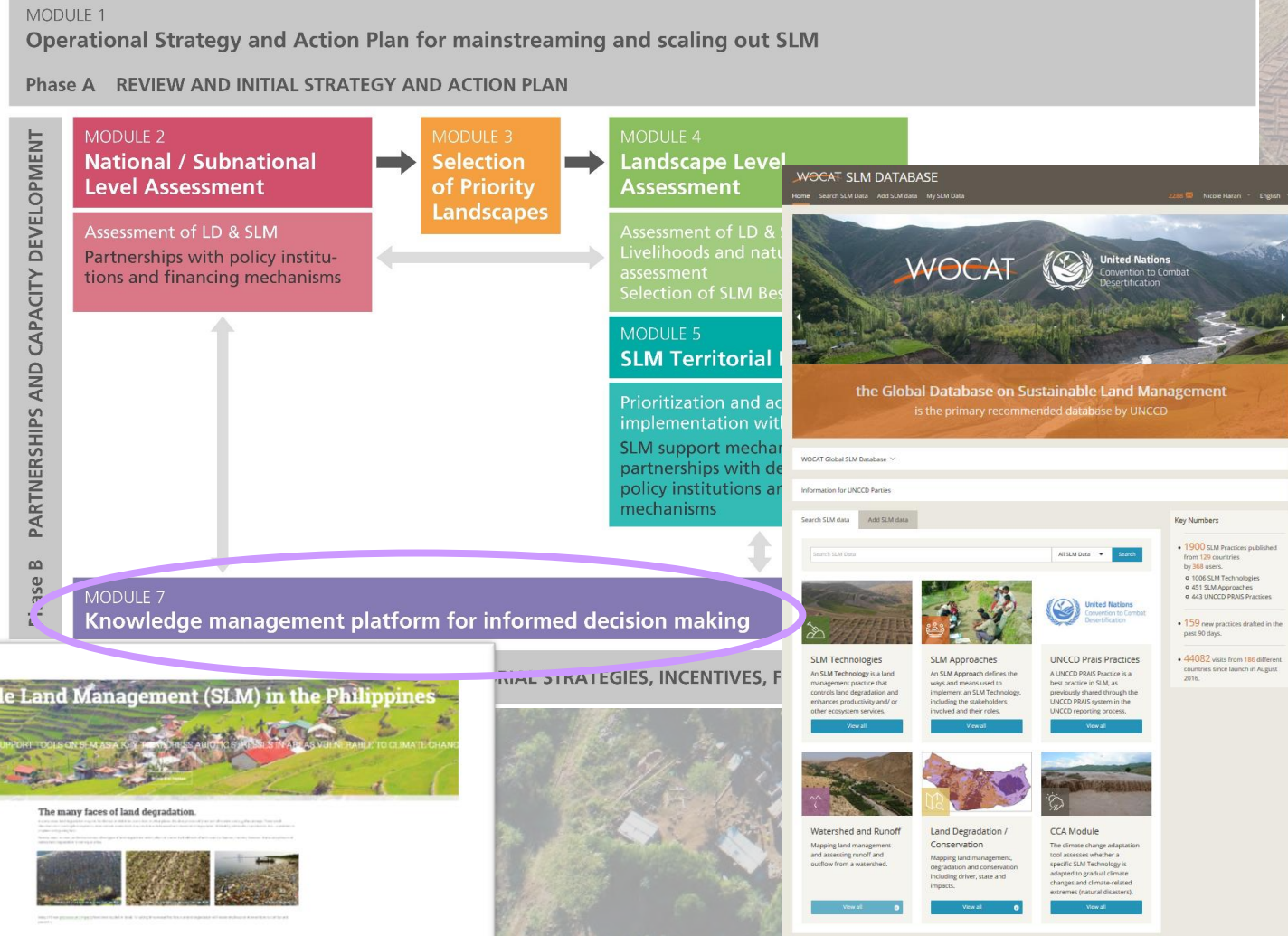
Decision Support Framework for Mainstreaming and Scaling out SLM

Module 7

- compile and share knowledge on **global and national platforms** to ensure evidence-based decisions
- **standardized and harmonized** knowledge management to enable comparisons (e.g. between different Technologies) and facilitate exchange
- share SLM practices on Global **WOCAT SLM Database** recommended by UNCCD for SLM BP reporting
- **Global Technical Guidelines** (synthesis document)

Tools:

- ❖ Global WOCAT SLM Database
- ❖ DS-SLM knowledge platform
- ❖ National platforms

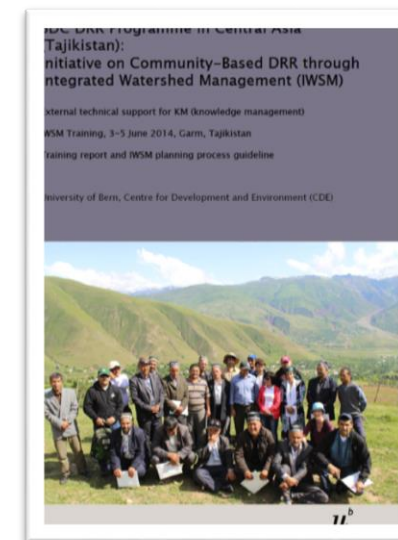
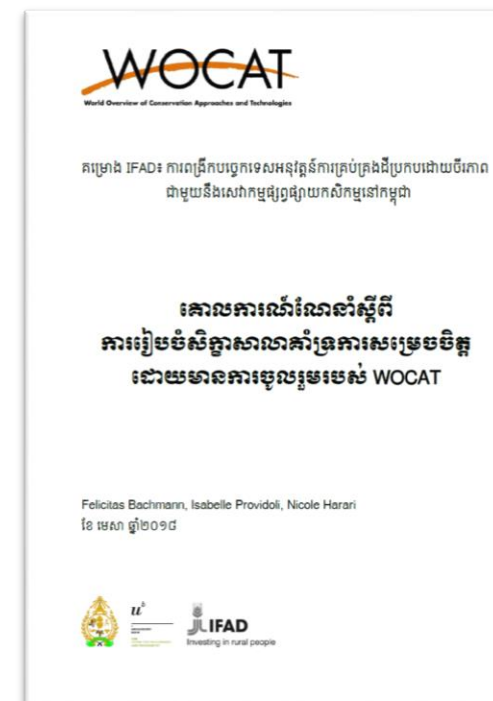
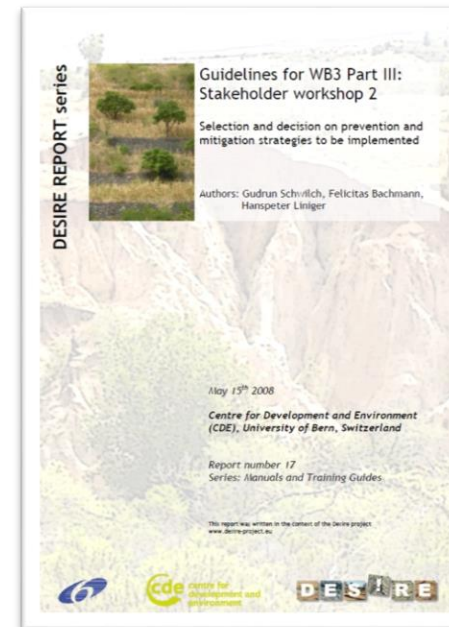


LOCAL level

Evidence-based selection of SLM practices through participatory stakeholder workshops

- Guidelines developed for SLM decision support at local level for **research projects** (EU-DESIRE, EU-RECARE)
- Adaptation of methodology with national project partners for use in **implementation projects** (e.g. with SDC, IFAD)

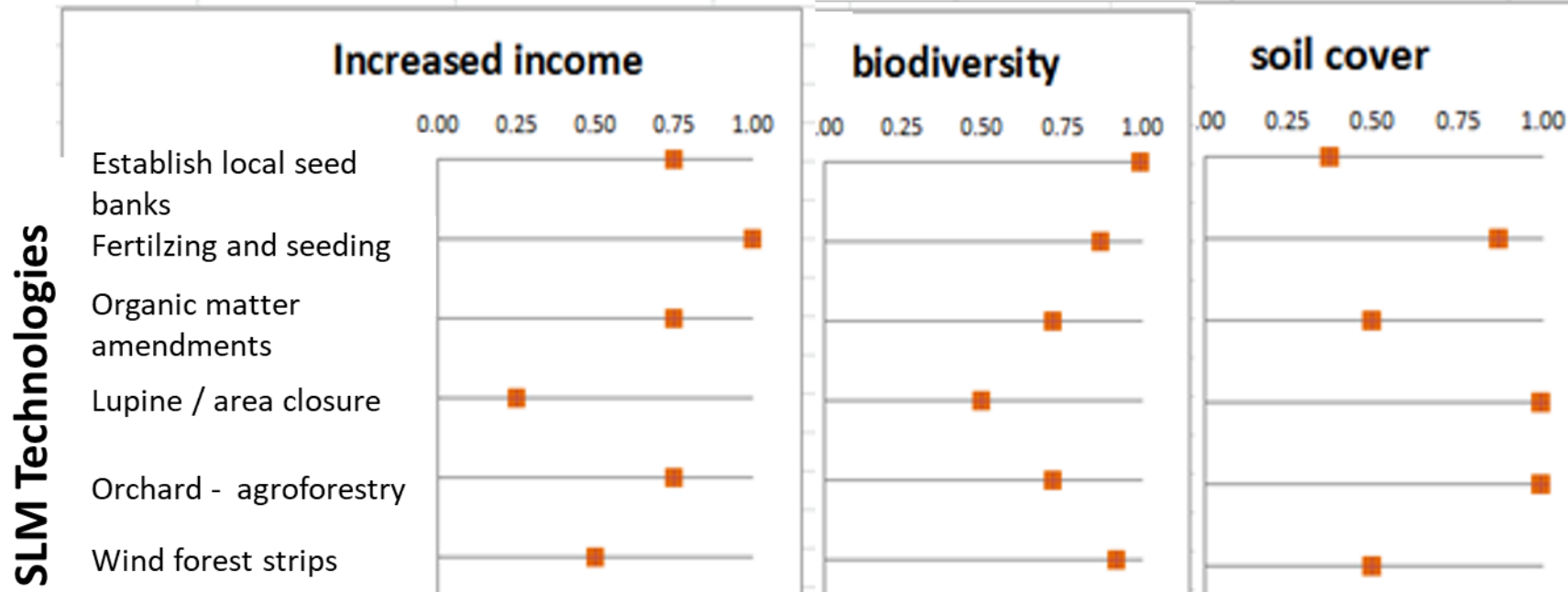
→ *Selecting Technologies for implementation in demonstration sites and scaling out*



Local level

Process of participatory stakeholder workshops:

1. Elaborate an understanding on the **local context** and LD problems
2. **Assess and score** documented practices based on selected criteria (economic, social and environmental)
3. Produce a **scoring matrix** for negotiation and final



Local level

Scaling out of selected SLM Technologies



Royal University of Agriculture Cambodia

