

Upscaling resilient mountain solutions in the Hindu Kush Himalaya

Sanjeev Bhuchar, Nand Kishor Agrawal, Pratigya Silwal

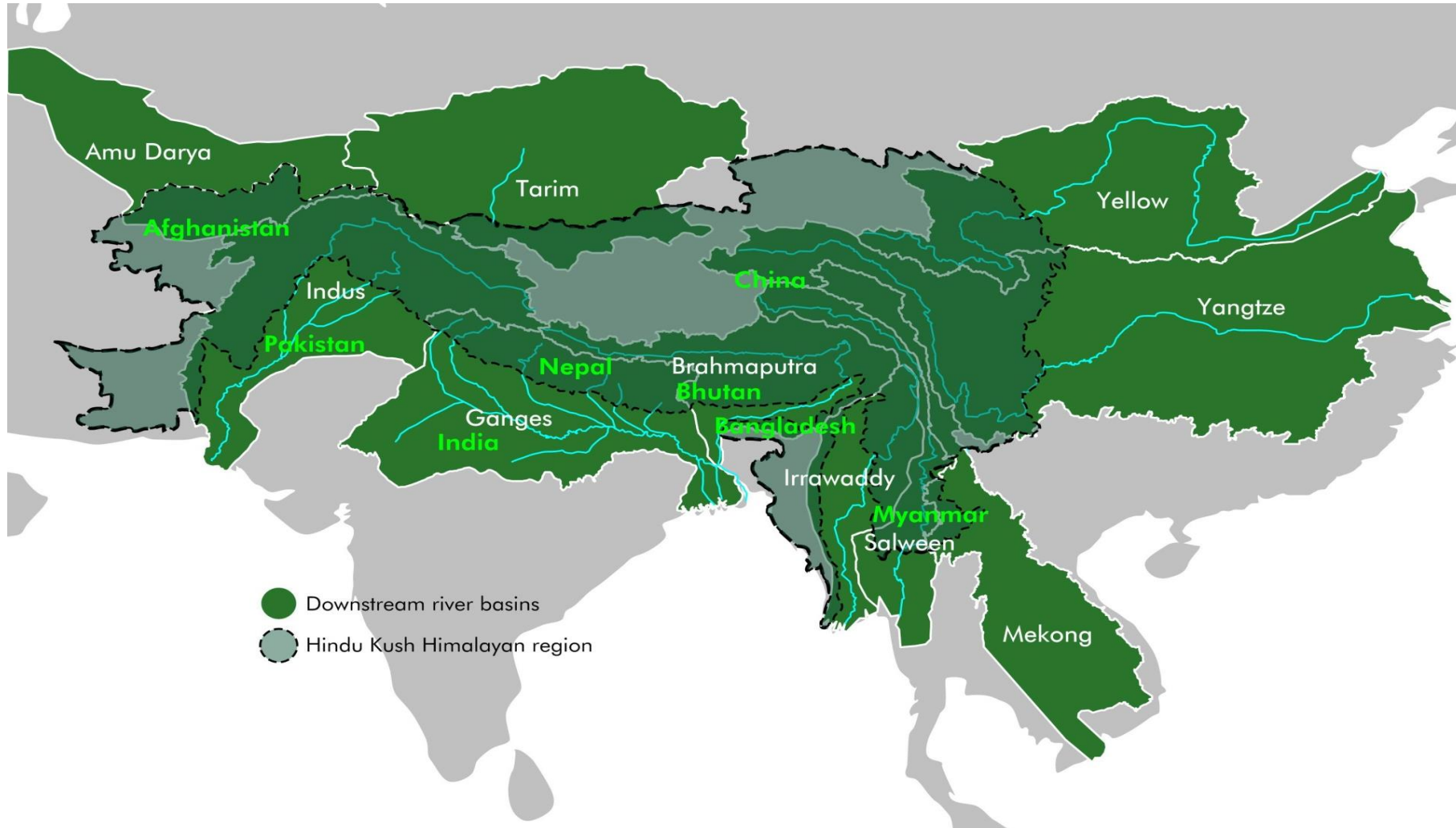
ICIMOD



Photo: Himalica/ICIMOD

FOR MOUNTAINS AND PEOPLE

ICIMOD is serving the Eight Countries of the Hindu Kush Himalaya: Regional Intergovernmental Learning and Knowledge Centre



- 240 million people in the HKH
- Source of 10 major Asian river systems
- Home to 4 global biodiversity hotspots
- 1.9 billion people in the river basins

60+ innovative solutions implemented by ICIMOD and partners



Financial literacy and flood preparedness, Assam, India



Heritage tourism, Kailash Sacred Landscape



Solar Pumping Irrigation, Rawalpindi, Pakistan



Two-source water harvesting tank, Shan, Myanmar

Resilient Mountain Solutions approach

- ✓ Simple, replicable & affordable
- ✓ Government-supported
- ✓ Customized for mountains
- ✓ Out-/up-scalable



E.g. *Jholmal*: Local, organic alternative to chemical pesticides & fertilisers



Types of *Jholmal*.

- ✓ *Jholmal* 1: Farmyard manure, animal urine, water
- ✓ *Jholmal* 2: Animal Urine and water
- ✓ *Jholmal* 3: Locally sourced plants with insecticidal or insect repellent properties, animal urine and water



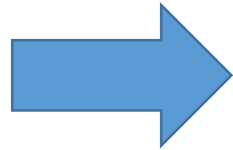
Benefits of *Jholmal*.

- ✓ Increased yields and income
- ✓ Improved soil and water quality
- ✓ Saves money for buying agro-chemicals
- ✓ Blends local knowledge and scientific research
- ✓ Women friendly practice

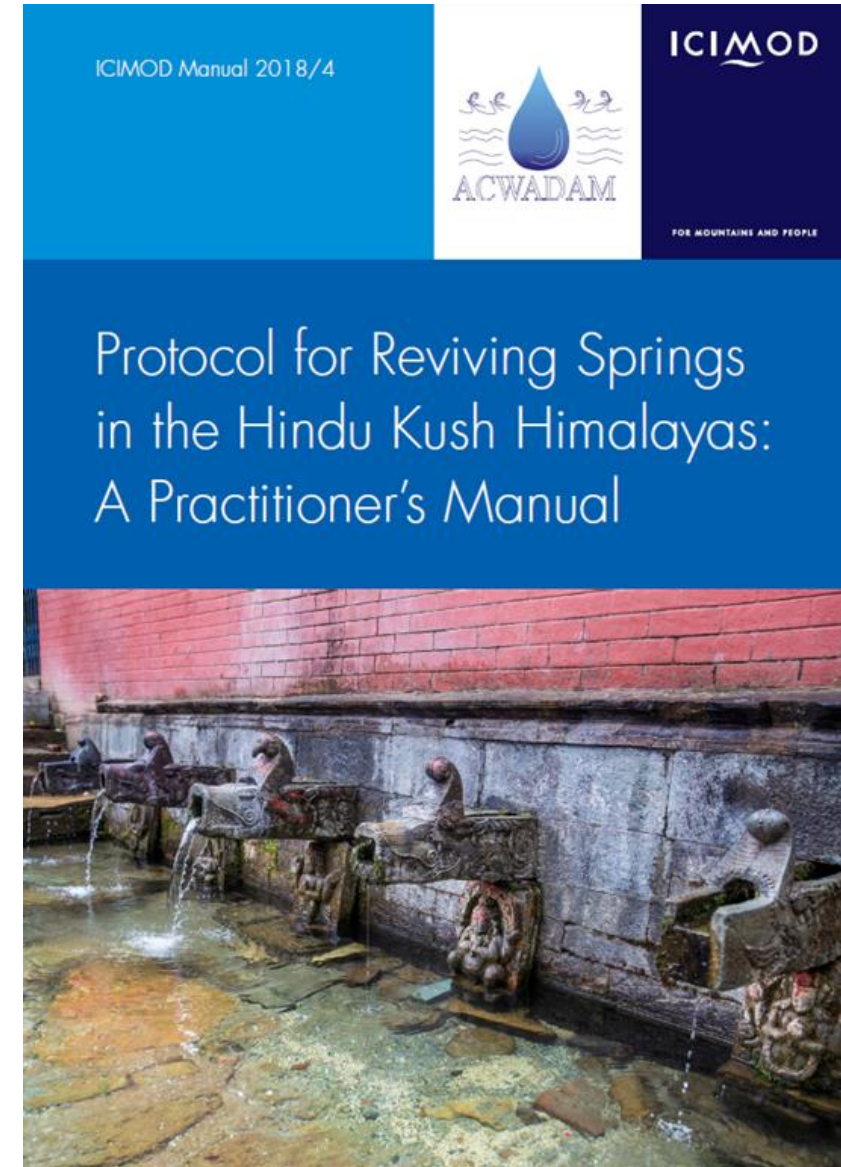
E.g. Spring revival: Integrating science of hydrogeology




WOCAT documented SLM
Technologies included for
springshed management



E.g. *Stone faced soil bund of Tigray*



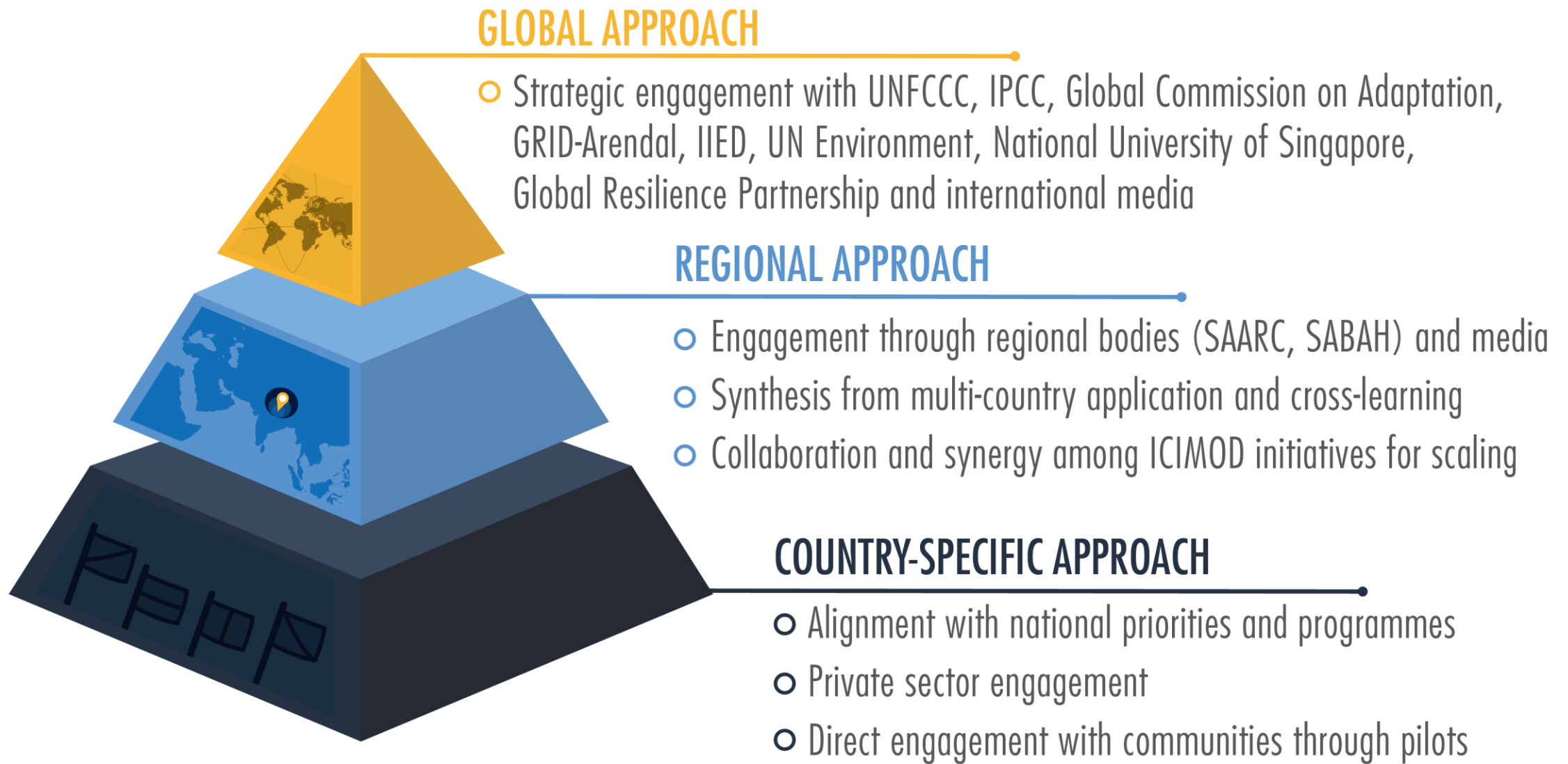
RMS Initiative - Objectives



Generate and promote the use of new knowledge on resilience building solutions in the HKH and globally through action research and pilot studies

Develop, test, and promote 'resilient solution packages' that are gender and socially inclusive and tailored to the HKH context

Collaborate and develop capacities of institutions to outscale and upscale programmes that support resilience to and opportunities from changes



Gender and Socially Inclusive Resilience Building Solutions Packages

- aligning with national priorities and with focus on poverty and climate change



Solutions
based on
context
analysis



*Examples:
Farming system,
springshed, market
linkage, clean
energy, IT-based
solutions*

Capacity
building and
cross-scale
linkages



*Examples:
Entrepreneurship,
mentorship
programme,
financial services*



Upscaling by Government of Nepal

- Government of Nepal promoting the approach in 41 municipalities in Nepal with investment of USD 600,000 for 2018-19
- Letter of Intent signed with the Department of Environment, Government of Nepal in 2018 to jointly collaborate on RMS approach across 41 municipalities in Nepal
- Regional Learning Hubs for outscaling

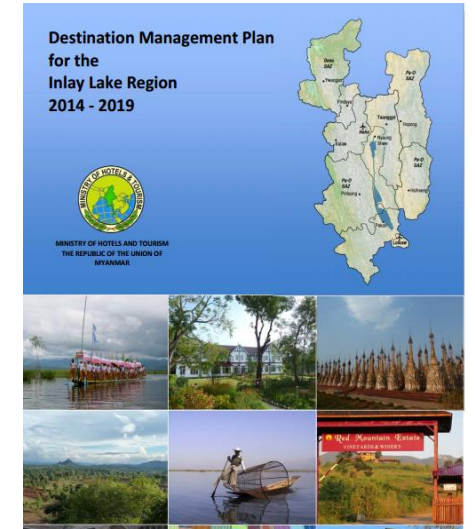


Support and Synergy: Bhutan's 12th Five-Year Plan

- Inputs for designing Bhutan's 12th FYP flagship programmes leading to greater investments in the sector
 - ✓ Organic Flagship Programme: Nu. 1 billion (~USD 14.2 million)
 - ✓ National Highland Development Flagship programme
 - ✓ Start-up and cottage and small industries development Flagship Programme (<http://www.kuenselonline.com/12th-plan-for-sustained-economic-growth-finance-minister/>)

Support and Synergy: Southern Shan, Myanmar

- Linking with national and state
 - ✓ Destination Management Plan for the Inlay Lake Region 2014-2019
 - ✓ Pa-O Self Administered Zone Development Plans (2018-2019)
 - ✓ Community Forestry
 - ✓ Other projects/programmes



RMS contribution to SDGs



THANK YOU!

International Centre for Integrated Mountain Development

A regional mountain knowledge, learning, and
enabling centre devoted to sustainable mountain
development for mountains and people

